

Chief Editor: Bangalore Niranjan Babu

May 2020

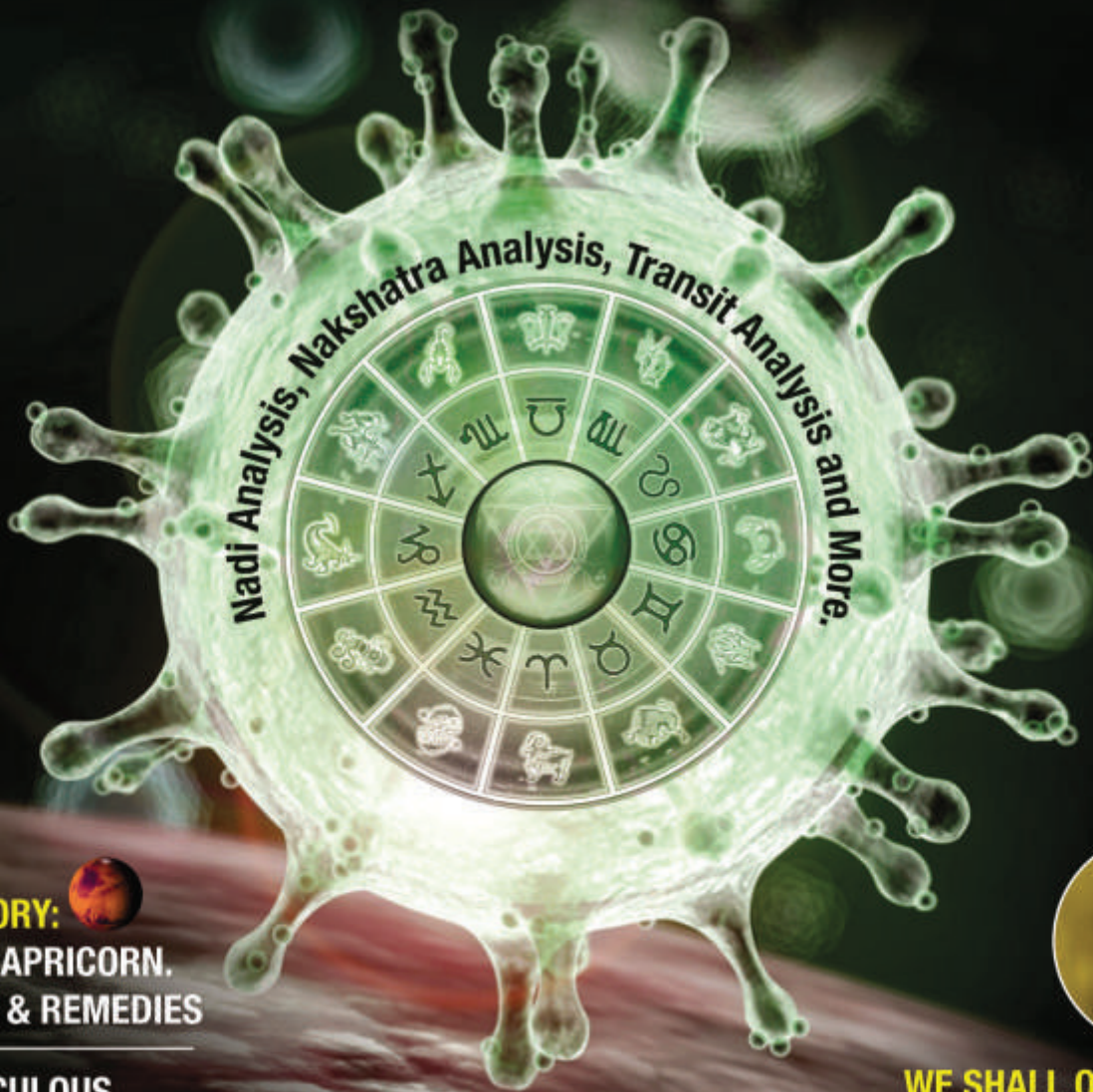
₹60

THE ASTROLOGICAL eMAGAZINE



Dr. B. V. Raman

ASTROLOGICAL ANALYSIS OF CORONAVIRUS PANDEMIC



COVER STORY: 
MARS IN CAPRICORN,
FORECAST & REMEDIES

THE MIRACULOUS
HEALTH BENEFITS OF
VISHNU SAHASRANAMA



WE SHALL OVERCOME:
SPECIAL MESSAGE FROM
SRI SRI RAVI SHANKAR

COVID-19

Why Coronavirus Began in China?

| R S Maniam



With a string of titles and awards given by different groups for his proficiency in astrology, Jothida Acharya R. S. Maniam had worked as a Medical Enforcement Officer in profession and currently is a clinical instructor and coordinator at Lincoln University College in Malaysia. He has been described by Bhagavan Sri Sathya Saibaba as ‘Divine Astrologer’ and he has been awarded the Nostradamus award in 2010. He has had his spiritual training under Swami Brama Sri Sivananda, Ponnamaravathi, Puthukottai District in South India. Mr. Maniam, with an experience of over 36 years in the study of astrology, has contributed many articles to various journals on different aspects of mundane astrology. He attributes his initial learning to Dr. B. V. Raman’s books, later having studied under late Mr. Muthuratina Bharathi. He has been honored the title Jothida Acharya, Jothida Gaurau and Jothida Kalamani by various organizations. He has been doing spiritual sadhana at Lakshmy Mantralaya being a senior disciple of Swami Brama Sri Sivananda.

The world is shocked by the outbreak of the epidemic which began in China. The fear has escalated as it is being declared as a global pandemic. It is a major outbreak of disease on large scale after SARS that started in China in late November 2002.

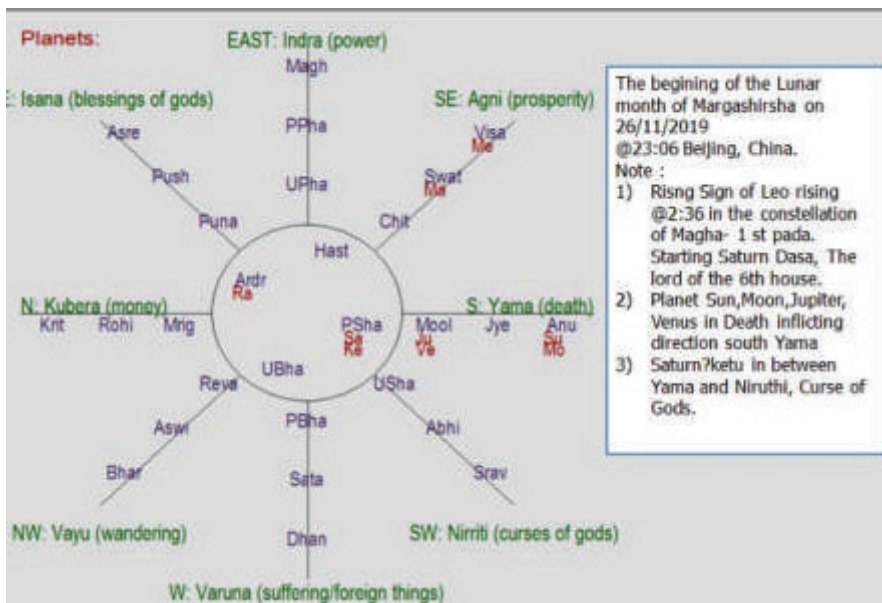
We can attempt to analyze the outbreak using the horoscope of Republic of China as birth chart of the nation, with 1/10/1949 as the primary chart. Since the COVID-19 outbreak began in late November and December 2020, we can use the lunar chart to establish a celestial link to the fearing disease. We can use the Vikari Margashirsha lunar chart which began on 26/11/2019 at 23: 06 taking Beijing as capital of China and followed by Lunar chart of Vikari Pusya which began on 26/12/2019 at 13:13 hrs. To support some findings, Solar ingress into Aries for 2019 can be used too.

What does the lunar chart of Vikari Margashirsha indicate?

The Chart has Leo rising, with Saturn, Jupiter, Venus and Ketu in the 5th house. The worst malefic for Leo Lagna, Saturn afflicting the 5th house of Purva punya. It also has the affliction of Ketu. Saturn/Ketu association in the 5th house depicts a curse of previous birth and normally causes birth with defects.

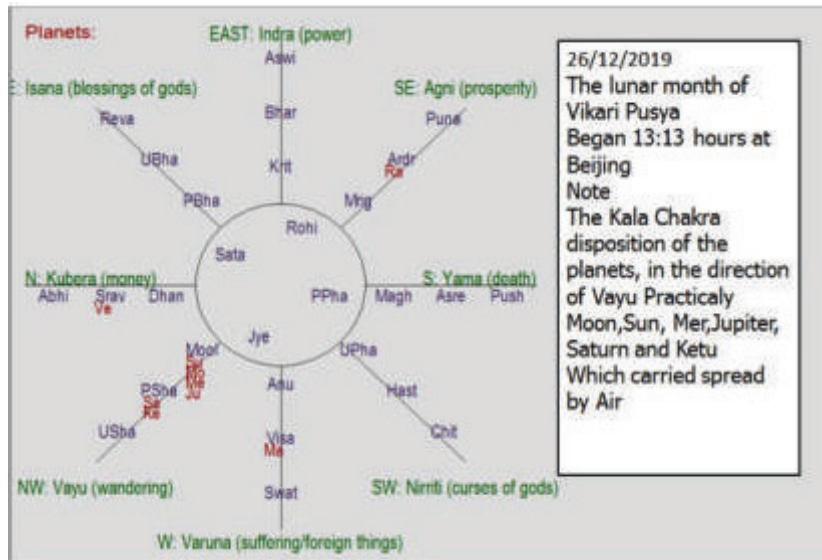


Does the Vikari Margashirsha lunar month chart show in Kala Chakra Chart?



The first lunar chart Vikari Margashirsha shows a Kala Chakra, where the planets transit in the direction of Nirutthi and Yama. These directions bring about fear, disaster and death. The direction of Nirutthi depicts the curse of the Gods. The planets are in constellation of Mula and Purvashada. Most of the planets confined to the South and South-west directions which depict curse and sorrowful incidents.

Does the Vikari Pushya Kala Chakra show any direction in special link?



Yes! The lunar month of Vikaari Pusya shows planetary pooling in the direction of North west which is ruled by Vayu, the wind God and it depicts wandering, major shift of place and form of migration. The medical mode of spread of COVID-19 is through air in the form of droplets emitted by the carrier or the diseased person.

What are the astrological findings associated in Republic chart of China?



Republic of China has Capricorn rising and Lagna and Moon falls in the same sign. Most significant in the chart is the current transit of Saturn over the rising sign of China and the Natal Moon. The renowned saint Pulappani has narrated in his stanza "When Moon crosses 12,1, and 2 sign from the natal Moon, one will undergo sickness, bodily ailment, suffering, theft, poverty and wandering and shift of place, theft and loss of dear ones in the family." Since China has both Natal rising and Moon rising in the same sign of Capricorn, the effect will be double folded.

Does the transit of Saturn have any impact on China?

Yes, when a major earthquake occurred in China on 1/6/1786, where an earthquake struck Sichuan district in China and about 100,000 people died. Saturn was transiting the sign of Capricorn with Rahu. In fact, the COVID - 19 cases started surging after 24/1/2020 when the current transit of Saturn moved to Capricorn sign.

Sichuan Earthquake

June 1, 1786
4:52:23 (3:00 East of GMT)
116 E 23' 00", 39 N 50' 00" (Beijing 8h, China)
Lunar day: Paridhara Jyestha Sula Fashtani (24-47% left)
Nakshatra: Pulayami (9-23% left)
Wednesday: Divura Tiga, Sabara Karasa, Saturn Mars



And when SARS was first reported in China, Saturn was transiting the sign of Gemini at 4:05 in the constellation of Margasirsa in retrograde motion too. The first report to public was reported on 16/11/2002. The lunar month of Chitrabanu Kartika started on 5/11/2002 at 4:35hrs. The rising sign of Virgo 21:19 Saturn in the 10th house. In fact, the Kala Chakra position Saturn then was in the direction of Vayu too. It was with Rahu in the direction of Northwest. SARS according to WHO was reported by China on 11/3/2003,

when Saturn in Retrograde joins Rahu in Taurus.

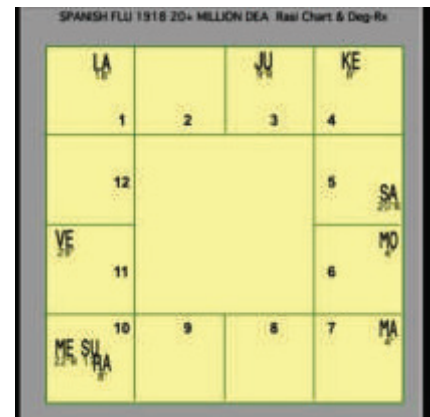
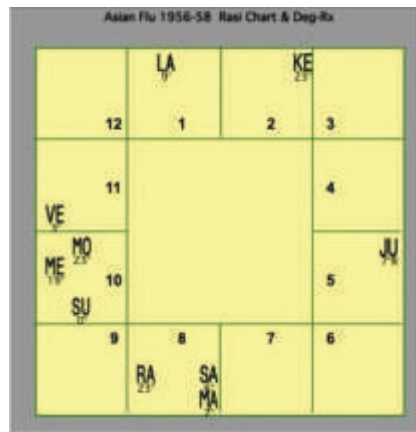
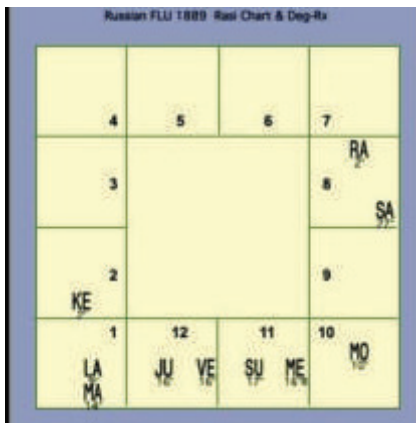
The word Corona is related to the planet Sun. Does the horoscope show any relation?

There is an association of the Sun with lunar southern node Ketu. In the natal chart, retrograde Mercury and Sun joined with Ketu in the 9th house of the Republic. However, eclipse occurred 22 days later in the 10th house from the natal horoscope. The affliction in the 9th house only shows curse of the ancestors and Gods. The recent eclipse, the same lunar southern node occurred on 22/12/2019 in the deadly constellation of Moola which is the 12th house of China. We can take it as the beginning point of the current surge of cases.

Do dirty conditions are associated with epidemic outbreak at Wuhan?

The available literature in astrology about description of a situation, or lost items, description of the thief are discussed by the great Saint Varahamihira in his tretay known as Brihat Jataka. He discussed in the chapter known as Drekan Lakchana,

Continued on Page 26...



In all these previous epidemics we see the involvement of Mars, Saturn and Rahu and the 8th house from Rahu is very much involved. It seems more than a coincidence. In fact, it seems rather compelling that Mars, Saturn and Rahu are very relevant in major pandemics.

SPANISH FLU:

1918-1920 with an estimated 20 to 70 million deaths.

Transit Jan 1, 1918 over Madrid – No CDC or WHO so onset date might be earlier.

Saturn in Cancer is 8th away from Rahu with Mars aspecting Rahu.

RUSSIAN FLU:

1889 -1890 –Transit over Moscow November 1888.

I used a few months earlier for this flu as this was before the days of WHO or CDC or telephone etc. So identification of this illness over various geographical areas would take some time to recognize the onset of an epidemic. Saturn and Rahu conjunct in Cancer under 8th aspect of Mars.

Why Coronavirus began in China?

Continued from page 23

the decanate. In this situation the lunar horoscope for the month Vikaari Margashirasa will be more accurate as the new time is calculated. Based on this chart, the lagna rising falls in the first Drekan of Leo at 2:47 Deg.Min. This is the first decanate of Leo described as "A vulture and jackal" seated on a cotton tree, a dog is near, and a man has poor attire (Alan Leo) and dirty (Chitamabaranatha iyer) lamenting for his parents (Crying, by Nadesa Sasthri). This is quadrap sign which is ruled by animals. Certain things can be deducted at least inductively. Dirty, animals, words like separation form parents, gives a clue that a distress situation has existed. As reported by media the food preparation and eating habits were reported.

Will situation improve?

With planets Venus moving to the sign of exaltation Pisces on 3/2/2020, situation is expected to improve especially when Sun moves into Aquarius on 13/2/2020 when the Sun becomes free from Saturn affliction. Mercury retrogression on 17/2/2020 may slow the situation of recovery. However the transit of Saturn over the natal Moon of Republic of China is main hindrance to the recovery phase.

Any remedial measure suggested as per astrology?

Yes, they should pray to Goddess Nirutthi and Yama. The transmission which is air borne will be reduced if they utter the mantra of Vayu. The best will be to ask for forgiveness from the ancestor. The disease also coincides with Chinese New Year.

Conclusion

The transit of Saturn in the sign of Capricorn has double effect on China as the sign of Magara is lagna and Moon sign. Saturn is maleficent often regarded as planets of sorrows, suffering, old aged people, and handicapped status. He is considered as elder brother to Yama, God of death. Finally, he is considered Air in the panchaboothas. The spread of the Covid-19 Virus through air is the main determinant in the spread of the disease. The statement by Shelley may prove the impact of Saturn

**Who reigns? There was the Heaven and Earth at first,
And Light and Love; then Saturn, from whose throne
Time fell, an envious shadow: such the state
Of the earth's primal spirits beneath his sway . . .**
SHELLEY

References

- Erin Sullivan, Saturn in Transit,2002 pg -1, statement by Shelley on Saturn,
- James Kelleher, Uses of Drekan
- Sars in China, Astrology chart out break
- Wuhan Corona Virus Out Break
- Constellation of Mula, Nirritti